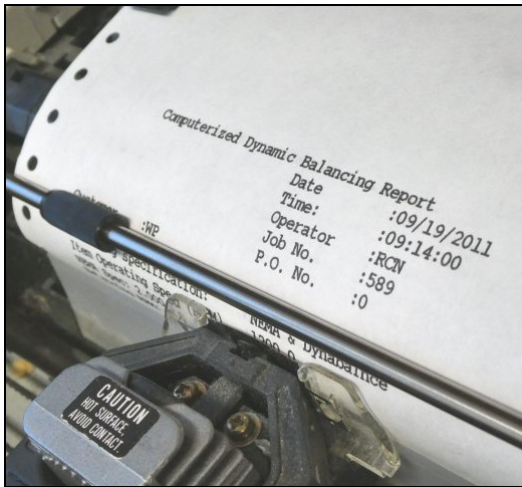


# Software Guide

## PDFAUTOMATOR2

## 2nd Generation Software

This software pdfautomator2 is second generation. It is Java based rather than Visual Basic and has more features than original pdfautomator (e.g. software named pdwired15). The user may substitute pdfautomator2 software without any changes in hardware.



**Capture print reports electronically from print cable.**

### Main Features:

- ▶ Print to real time monitor window for user feedback.
- ▶ Automatically log print report data to user file folder.
- ▶ Convert print report capture file automatically to PDF.
- ▶ Choose to automatically display created PDF.
- ▶ Choose to automatically print PDF to modern PC default printer.
- ▶ The next print report automatically logs to new timebased file name without any user intervention.
- ▶ For unattended 24/7 operation.

Main Screen:

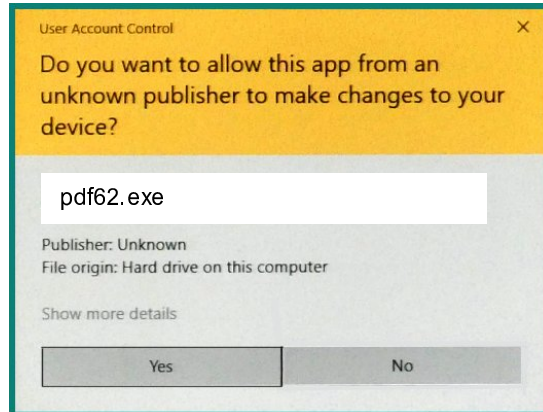
Annotations for the screenshot:

- User settable title
- For Windows 7, 8, 10
- Fixed, non-resizable window for standardization benefit. 710 x 400 pixels
- Real time log display of plain Generic Text Data. All possible data bytes received are mapped to font characters.
- Log File Path
- Online notification: blinks "CONNECTED"
- Convenient access to report file for inspection.
- User settable title

## INSTALLATION

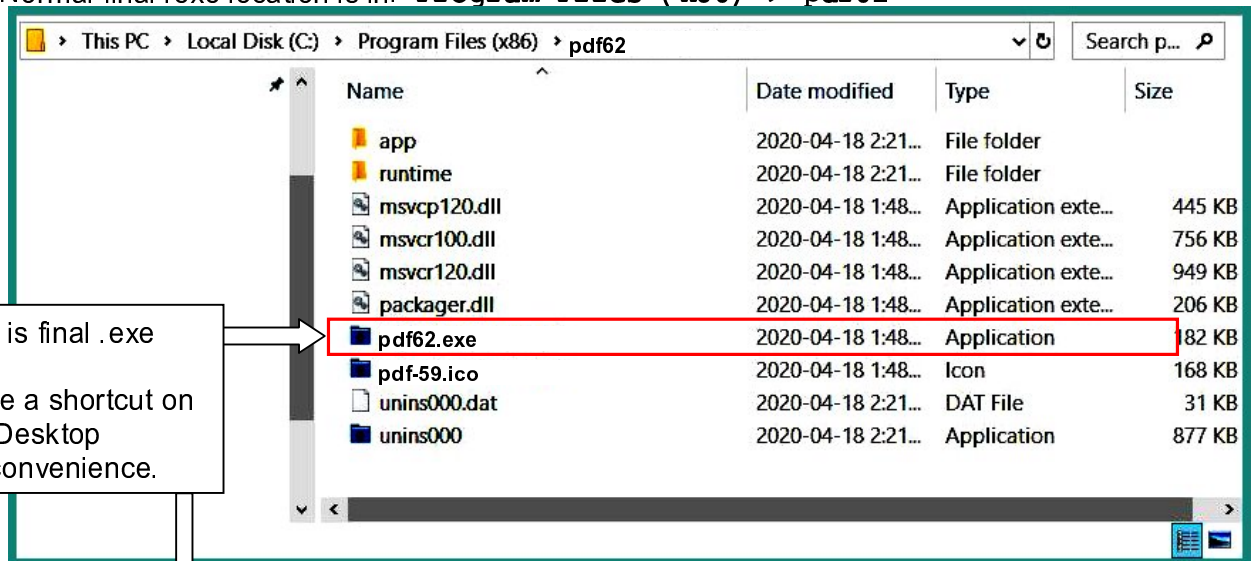
Click on: **pdf62.exe** supplied on CD-ROM

Pop-up Occurs:



Give permission to install PDF Automator application.

Normal final .exe location is in: **Program Files (x86) > pdf62**



This is final .exe  
Make a shortcut on the Desktop for convenience.

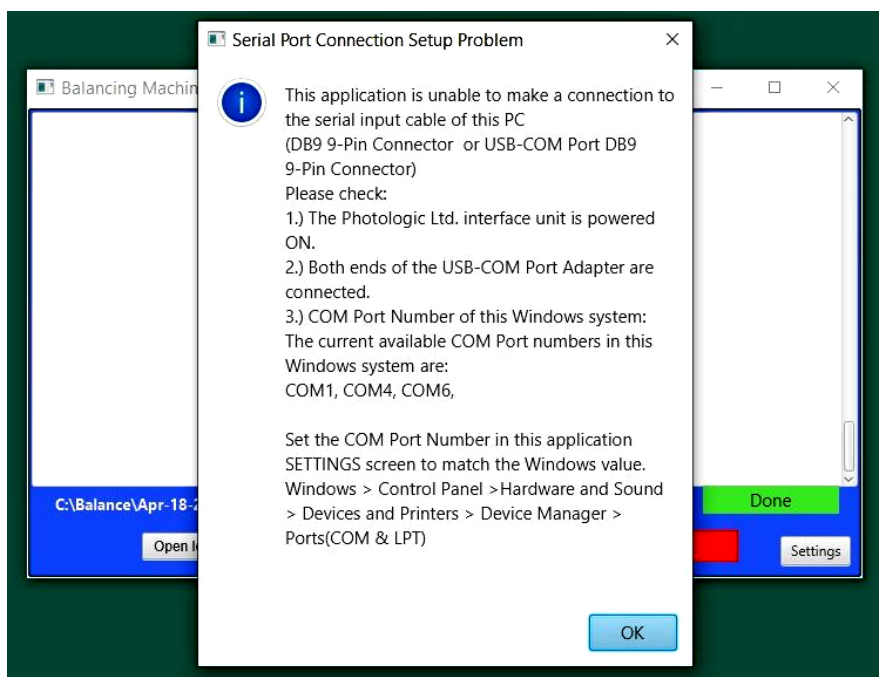


### Open Application:

A message box opens prompting the setup of USB Serial COM Port Number.

The USB-Serial COM Port Adapter supplied should make a COM Port Number when plugged in.

See: [pdwired\\_instructions.pdf](#) for help setting up the serial com port.



## SETTINGS SCREEN

The screenshot shows the 'Balancing Machine' settings window. Callouts provide the following information:

- Display Line Spacing:** Options include CR = CR (Normal), CR = CR + LF, LF = CR + LF, and CRLF = CR. A callout notes: "Add 'new-line' formatting to Main Screen text display."
- COM Port #:** Set to 4. A callout notes: "COM Port# must match USD COM Port Adapter. Possible COM Ports are listed." Below the dropdown, it lists "Possible Available Ports On This PC: COM1, COM3, COM4".
- Monitor Screen Font Size:** Set to 12.
- Audio Bell "Start/Done":** Checked. A callout notes: "Audio Bell alerts start of print job, and pdf complete."
- Print after PDF is created:** Checked. A callout notes: "Print after PDF is created."
- Print to screen in focus, e.g. MS Word:** Checked. A callout notes: "User file path for destination log folder."
- Make report file to folder after 3 seconds end of report data pause:** Set to 3. A callout notes: "Make PDF if report data has stopped for 3 seconds."
- Make PDF from plain Generic Text or PCL data:** Unchecked. A callout notes: "Enable/Disable PDF creation and display. (E.g. make plain generic .txt file)".
- Auto Print to default printer at end of job:** Unchecked.
- Auto Open the PDF above:** Unchecked.
- Extra Columns for plain text PDFs:** Unchecked.
- Edit: Save log to this folder location. This path must be an already existing path.** Path: C:\balance.
- Enter Banner (Optional):** Balancing Machine.
- Log location:** C:\balance.
- Buttons: Back & Reconnect, Save Settings, Help, About.

### COM PORT NUMBER:

After the USB COM Port adapter is installed, its COM Port Number will be found in Windows: Control Panel > Hardware and Sound > Devices and Printers > Device Manager > Ports(COM & LPT)  
See: pdwired\_instructions.pdf for help.

## WORKING FOLDERS ON PC

**C: \pdfautomator2** *This folder always exists. Installation creates it automatically.*

<b>diagnostic.txt</b>	<i>last report data raw capture</i>
<b>properties.txt</b>	<i>access not required by user</i>
<b>temp.txt</b>	<i>access not required by user (normally empty)</i>
<b>bootups.txt</b>	<i>timestamped log of all PDF Automator bootups</i>

*Log files exist here if user has not set a user folder:*

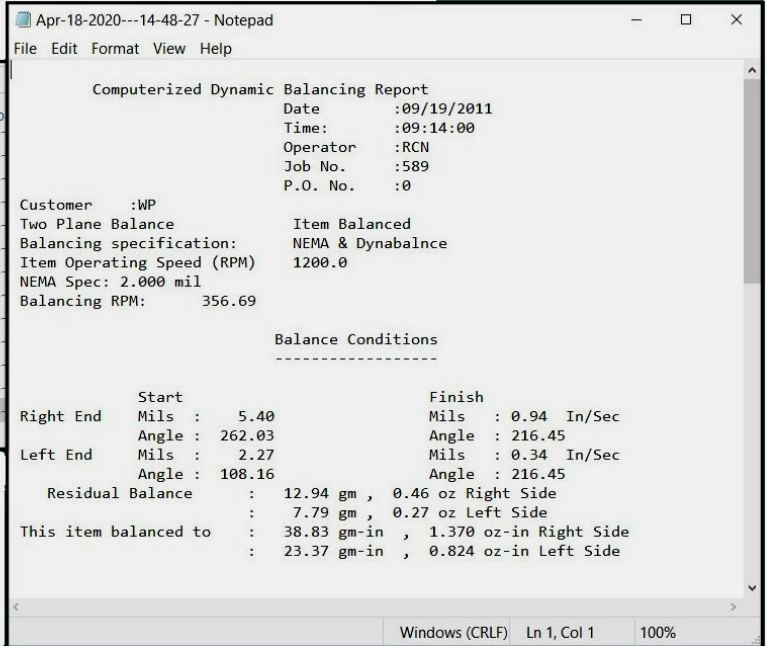
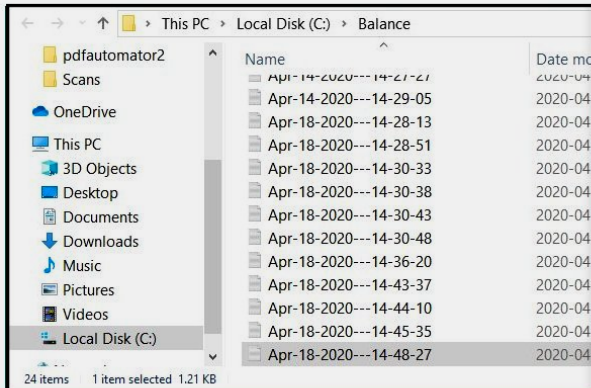
<b>Apr-15-2020---14-20-08.txt</b>	<i>text file if PDF setting disabled</i>
<b>Apr-15-2020---21-54-11.txt</b>	<i>text file if PDF setting disabled</i>
<b>Apr-15-2020---26-10-33.pdf</b>	<i>PDF file if PDF setting enabled</i>

*Log files exist here if user has set a user folder:*

<b>C: \Balance</b>	<b>Apr-15-2020---14-20-08.txt</b>	<i>text file if PDF setting disabled</i>
	<b>Apr-15-2020---21-54-11.txt</b>	<i>text file if PDF setting disabled</i>
	<b>Apr-15-2020---26-10-33.pdf</b>	<i>PDF file if PDF setting enabled</i>

*Log file names have Seconds resolution to avoid overprinting a file.*

**Example of logging print reports to a user folder with PDF setting disabled:**



Each print report creates a separate .txt file.

**ABOUT CREATING PDFs**

The print report input data must be either plain generic ASCII Text, or HP PCL print emulation data.

Many legacy measuring equipment systems used HP LaserJet printers. These printers used HP PCL3, PCL4, or PCL5 print emulation. PDF AUTOMATOR is compatible to such printers. PDF Automator will create detailed and perfect PDF renderings of the print report graphics, (Black&White or Color). PCL6 is not compatible.

If print reports use Epson Graphics then the data will be captured in the log file accurately, however a PDF cannot be made. The graphics cannot be viewed with or without PDF setting. A 3rd party conversion software would have to be applied to the log file. Example: Epson ESC/P to .bmp/.jpg

If your system is unfortunately outputting Epson print emulation style graphics, then it may be possible to change your outputting equipment to HP LaserJet printer setting to allow PDFs to be created.

**SPECIFICATIONS:**

<b>Software Name:</b>	pdf62.exe 64MB (Current Ver. 1.0)
<b>Compatibility:</b>	Windows 7, 8, 10
<b>Compatible Hardwares:</b>	Models PD-WIRED, PD-S-WIRED, PD5
<b>Print Data Input Type:</b>	Plain Generic ASCII Text, DOS Text, or HP PCL3, some HP PCL4,5
<b>Time to create PDF:</b>	5-10 seconds after print report ends. Do not send next print report.
<b>Maximum Print Columns:</b>	>132 col. for plain text data input. Limit not applicable for PCL data.

**UNINSTALLING SOFTWARE:**

Software is located in C: > Program Files(x86) > pdf62 (normal location)  
 Use Windows Uninstall

# PRINT-TO-WORD FEATURE

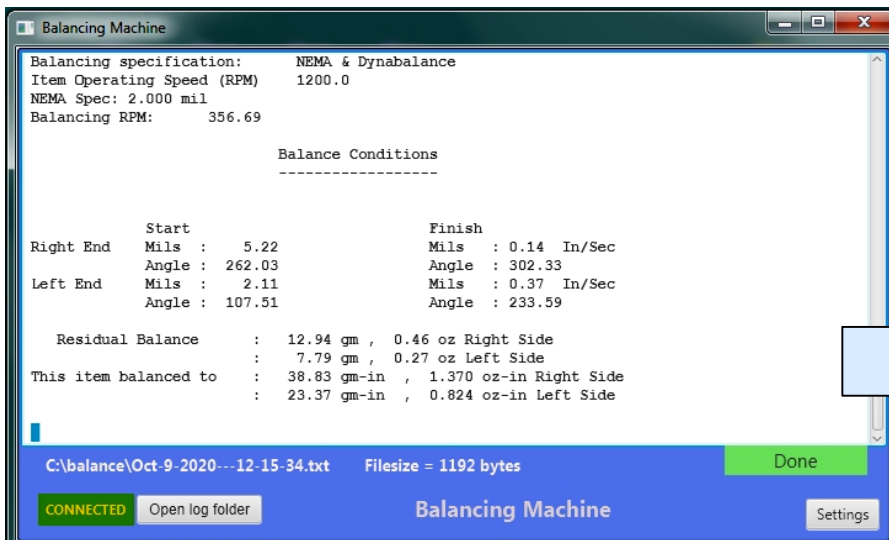
CONTAINED IN PDF AUTOMATOR SOFTWARE

This setting adds an extra destination of the print data. It feeds the print data to an MS Word screen. The data is fed to any screen that is "in focus", e.g. Word, Notepad, Wordpad. This setting allows the operator to use all the features of Word to produce a custom designed display incorporating Word fonts, font sizes, line spacing, background, and font colors.

Create specialized data monitor displays using all the features of MS Word:

- Fonts
- Font Color, Background Color
- Font Size
- Line Spacing
- Templates with logos, graphics

## LIVE PRINT DATA RECEIVED IN PDF AUTOMATOR APPLICATION SCREEN:



This feature works concurrently with other PDF Automator settings. Thus the user can continue to make PDFs and file saves automatically.

Received print data prints directly into an "in focus" Word window.



WORD DOC

## WIDE BODY SUPPORTED

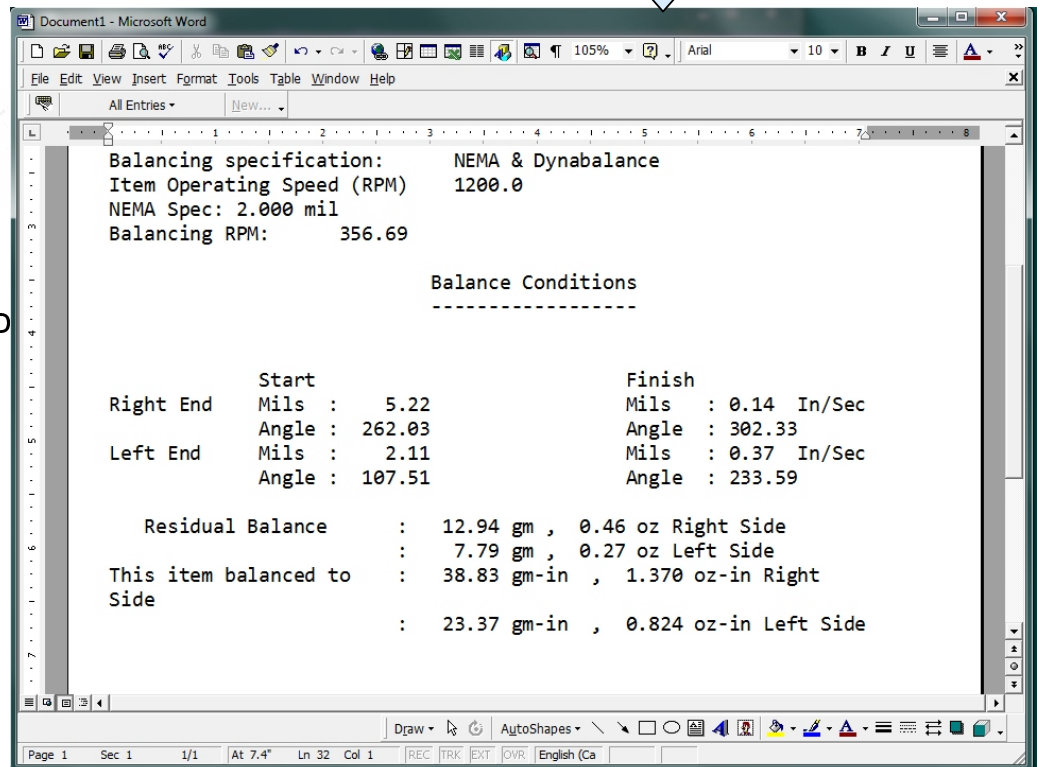
Set Word font size to support the number of print columns you need.

## DATA LOGGER

Set Word to "AutoSave" to log to a .doc file every few seconds.

## SECURITY

Word Password features may offer secure access and protection of Word doc created.



The auto typing of live received print data into Windows screens can allow many innovative applications to exist.

**Use any text app screen:**

- Other wordprocessors:
  - WordPerfect
  - LibreOffice Writer
  - WPS Office

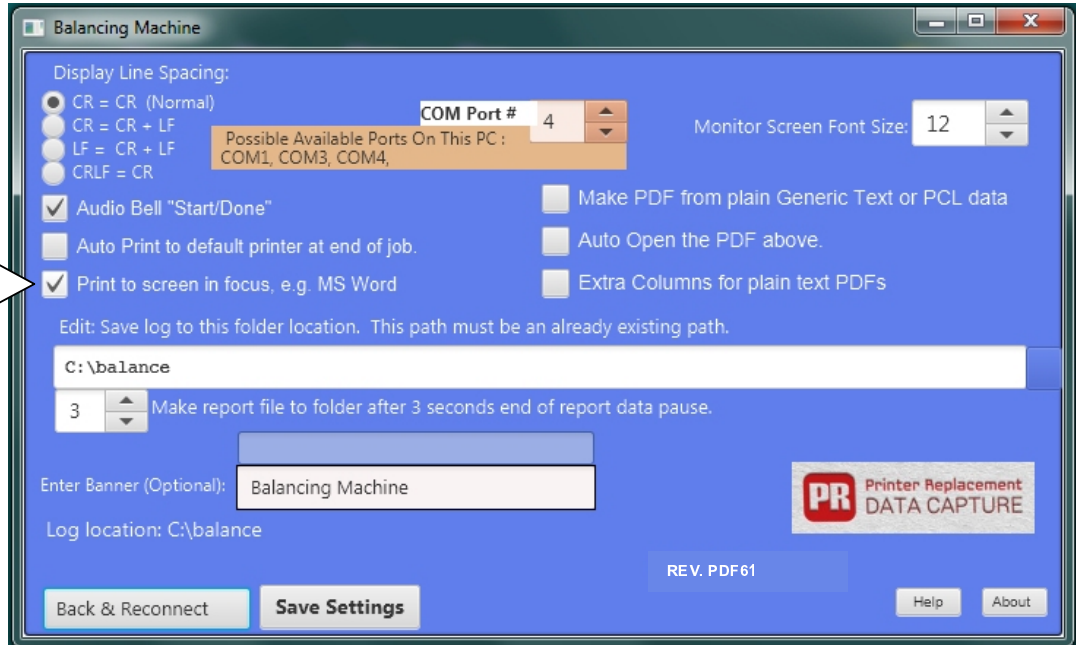
**Innovative uses with:**

- Terminal Emulators by printing live data into a screen window that immediately sends the data to an IP Address.
- Google Drive Docs: by auto typing the received print data directly into the doc screen which is immediately saved to the cloud.

**SETUP:**

**Print-to-Word**  
For printing plain generic text received into any text screen in

This is useable while other settings are in



**HARDWARE SETTINGS:**

